

## **KTRD Project Work Plan**

### Work Plan Approach

The Kerr-Tar Regional Council of Governments (KTRCOG) is a regional planning and government service agency that serves the Kerr-Tar Region which includes Franklin, Granville, Person, Vance, and Warren counties. KTRCOG has defined a project scope for the United States Department of Agriculture, Broadband Technical Assistance program as the Kerr-Tar Rural Development (KTRD) project for Distressed and Socially Vulnerable Communities. KTRCOG is an eligible applicant for the Broadband Technical Assistance program as a *State or local government, including their agencies, subdivisions, instrumentalities, or political subdivision*. KTRCOG request \$1,000,0000 under the funding category of a technical assistance *provider* to support the expansion of broadband in identified rural communities by delivering expertise and technical assistance. KTRCOG proposes to deliver broadband technical assistance through the KTRD project that will benefit rural areas in the region that were identified as distressed or socially vulnerable through the USDA BTA Map.

- *Distressed Communities and Socially Vulnerable Communities (zip code)*; Henderson (27536), Macon (27551), Roxboro (27573), Warrenton (27589)
- *Distressed Community* Manson (27553) in Vance and Warren counties
- *Socially Vulnerable Communities* Butner, Franklinton, and Louisburg
- *Socially Vulnerable Communities (Census Tracts)*; Warren County (9501.03, 9503, 9504), Vance County (9605, 9606, 9607, 9608).

Each of these project sites were identified using United States Department of Agriculture Broadband Technical Assistance program materials. None of these rural areas have a population greater than 20,000 in the town, city, or incorporated area, and none are adjacent to a city or town with a population greater than 50,000<sup>1</sup> as confirmed by the most recent decennial U.S. Census data. Funding for the project will support the following forms of broadband technical assistance:

- Identifying public and private resource to finance broadband facilities
- Preparing feasibility studies, financial forecasts, market surveys, environmental studies, and technical design information to support broadband services
- Preparing reports and surveys necessary to document the need for broadband services, determine price ranges, and request financial assistance
- Analyzing and improving broadband facilities management and operations, including implementing automation, adopting new software, conducting training, and determining efficiency

User education and digital literacy training will be a secondary aspect of the broadband project, complementing the primary focus of promoting the expansion of broadband services into eligible rural areas. USDA Rural Development staff involvement is welcomed for the following support:

- Developing training sessions and outreach materials
- Hosting joint gatherings of community members, partners, and stakeholders
- Providing joint delivery for training for USDA RD programs

---

<sup>1</sup> United States Code, “7 U.S.C. 1991(a)(13)(H) and (I).”

*Franklin County:* Based on local data from the 2023 NCACC Map Book, Franklin County has a population of 75,698, a Poverty Tax Rate of 0.7850, and ranked 79 out of 100 North Carolina counties.<sup>2</sup> According to myFutureNC 2024 Attainment Profile the top three employers for Franklin County are Franklin County Schools, County of Franklin, and Novozymes North America Inc and residents ages 25-44 reported 53% of the population does not have a degree.<sup>3</sup> The southern half of Franklin County is experiencing overflow from the Raleigh, capital area. However, the most northern section of the county does not experience the same economic upswing. Including Franklin County in the project would support regional development for Socially Vulnerable Communities, Franklinton (population 2,456)<sup>4</sup> and Louisburg (population 3,064).<sup>5</sup>

*Granville County:* Based on local data from the 2023 NCACC Map Book, Granville County has a population of 62,776, a Poverty Tax rate of 0.8400, and ranked 90 out of 100 North Carolina counties.<sup>1</sup> According to myFutureNC 2024 Attainment Profile the top three employers for Granville County are the State of North Carolina Department of Health and Human Services, Food Lion, and the United States Department of Justice and 55.5 % of residents ages 25-44 reported not having a degree.<sup>2</sup> Including Granville County in the project would support regional development for Socially Vulnerable Communities identified, Bunter (population 8,397)<sup>6</sup>.

*Person County:* Based on local data from the 2023 NCACC Map Book, Person County has a population of 39,681, the Poverty Tax Rate was 0.7225, and was ranked 63 out of 100 for counties.<sup>1</sup> According to myFutureNC 2024 Attainment Profile the top three employers for Person County are Person County Schools, Gkn Driveline Inc., Poly wood Llc.<sup>2</sup> GKN Driveline Inc. is slated to close.<sup>7</sup> Including Person County in the project would support regional development for Distressed and Socially Vulnerable Communities identified, Roxboro (population 8,134)<sup>8</sup>.

*Vance County:* Based on local data from the 2023 NCACC Map Book, Vance County has a population of 41,815, a Poverty Tax rate of 0.8900, and ranked 96 out of 100 North Carolina counties.<sup>1</sup> According to myFutureNC 2024 Attainment Profile the top three employers for Vance County are Wal-Mart Associates Inc., Variety Wholesalers Inc., and Vance County Schools.<sup>2</sup> Including Vance County in the project would support regional development for Distressed and Socially Vulnerable Communities identified; Manson (part of population 1,944), Henderson (population 15,060), Census Tract 9602 (population 4,107), Census Tract 9605 (population 4,650), Census Tract 9606 (population 1,375), Census Tract 9608 (population 1,898), Census Tract 9609 (population 7,985), Census Tract 9610 (population 5,518).<sup>9</sup>

*Warren County:* Based on local data from the 2023 NCACC Map Book, Warren County has a population of 18,892, a Poverty Tax rate of 0.8100, and ranked 84 out of 100 North Carolina counties.<sup>1</sup> According to myFutureNC 2024 Attainment Profile the top three employers for Warren County are Warren County Schools, County of Warren, and Glen Raven Inc.<sup>2</sup> Including Warren County in the project would support regional development for Distressed and Socially Vulnerable Communities identified, Manson (part of population 1,944), Macon (population 110), Warrenton

---

<sup>2</sup> North Carolina Association of County Commissioners, "County Data and Information."

<sup>3</sup> MyFutureNC, "North Carolina County Educational Data and Resources."

<sup>4</sup> United States Census Bureau, "Franklinton NC 2020: DEC Demographic and Housing Characteristics."

<sup>5</sup> United States Census Bureau, "Louisburg NC 2020: DEC Demographic and Housing Characteristics."

<sup>6</sup> United States Census Bureau, "Butner NC 2020: DEC Demographic and Housing Characteristics."

<sup>7</sup> "GKN Driveline to Close Roxboro NC Plant, Lay off Employees | Raleigh News & Observer."

<sup>8</sup> United States Census Bureau, "Roxboro NC 2020: DEC Demographic and Housing Characteristics."

<sup>9</sup> United States Census Bureau, "Vance County Census Tracts 2020: DEC Demographic and Housing Characteristics."

(population 851), Census Tract 9501.03 (population 2,426), Census Tract 9503 (population 3,726), Census Tract 9504 (population 3,263).<sup>10</sup>

Population Density impacts expanding broadband service to rural areas. According to the Historical Population Density Data (1910-2020), population density is a measure of average population per square mile. Density levels have been higher across the Eastern seaboard and the Pacific coastline and lower in much of the West. North Carolina has a resident population of 10,439,388, a Population Density of 214.7, and a Density Rank of 17 out of 52 in the United States.<sup>11</sup> In order to understand the population density in the project area, calculations were performed based on the United States Census Bureau methodology. The value is calculated by dividing the total population by the total land area.<sup>12</sup> Rough calculations were performed using this methodology to highlight county population density and the Kerr-Tar Region population density.

<b>Area to be Served</b>	<b>Total Population</b>	<b>Total Land Area</b>	<b>Population Density</b>
Franklin County <sup>13</sup>	68,573	491.8 sq. mi.	139.43
Granville County <sup>14</sup>	60,992	532.0 sq. mi.	114.65
Person County <sup>15</sup>	39,097	392.3 sq. mi.	99.66
Vance County <sup>16</sup>	42,578	252.4 sq. mi.	168.69
Warren County <sup>17</sup>	18,642	429.4 sq. mi.	43.41
Kerr-Tar Region	229,882	2,097.9 sq. mi.	109.58

The lower the population density, the less people are within one square mile of land area. Warren County is the least densely populated, followed by Person County, Granville County, Franklin County, with Vance County being the most densely populated in the region. The average for the region was 109.58 population within one square mile area. The exceptionally rural and rural communities in the KTRD project area face unique challenges with rural broadband expansion efforts. Internet Service Providers (ISPs) will target higher population density areas in order to recoup the cost of the infrastructure build out.<sup>18</sup>

<sup>10</sup> United States Census Bureau, “Warren County Census Tract 2020: DEC Demographic and Housing Characteristics.”

<sup>11</sup> United States Census Bureau, “Historical Population Density Data (1910-2020).”

<sup>12</sup> United States Census Bureau, “Understanding Population Density.”

<sup>13</sup> United States Census Bureau, “Franklin County, North Carolina - Census Bureau Profile.”

<sup>14</sup> United States Census Bureau, “Granville County, North Carolina - Census Bureau Profile.”

<sup>15</sup> United States Census Bureau, “Person County, North Carolina - Census Bureau Profile.”

<sup>16</sup> United States Census Bureau, “Vance County, North Carolina - Census Bureau Profile.”

<sup>17</sup> “Warren County, North Carolina - Census Bureau Profile.”

<sup>18</sup> “States Aligning to Federal Broadband Access Standards, but Barriers Remain.”

## Work Plan Implementation

*Proposed Broadband Technical Assistance:* The United States Department of Agriculture Broadband Technical Assistance program aligns with the implementation phase in the Kerr-Tar region and will bolster capacity support needed for KTRCOG to expand support to Distressed and Socially Vulnerable Communities identified in the KTRD project scope. The support needed in rural and exceptionally rural communities, requires more capacity for technical assistance providers to deliver effective programming to the areas served. KTRCOG will continue to collaborate with local governments, local tech organizations that offer training (Kramden Institute and HubZone Technology Initiative, etc.), digital literacy programs depending on the level of need (Community Colleges, Universities, Library Systems, NCWorks, etc), ArcGIS ESRI service, feasibility consultants, support environmental review compliance with the State Historic Preservation Office (SHPO), and rural advocacy support. Broadband expansion will be supported through local government technical assistance pursuing with existing KTRCOG Regional Project Manager to pursue grant funding opportunities, support GIS mapping, and provide technical assistance to support goals and objectives identified in the County Digital Inclusion Plans. The major tasks of the project are to provide technical assistance to local governments identified as Distressed or Socially Vulnerable Communities. KTRCOG proposes to expand capacity to support the region through hiring a Regional Broadband Coordinator, a Digital Navigator: Community Organizations, and a Digital Navigator: Workforce Development. These three positions each have a proposed scope of work and an annual contract agreement, eligible for renewal for an additional year) to support the project. The contractor rate of pay is set for all KTRD project contractors at \$40 per hour without benefits. All of these positions will report directly to KTRCOG existing staff, the Regional Project Manager. The local governments do not have staff to support these efforts and has requested KTRCOG provide staff to coordinate and manage the KTRD project programming. A mobile unit is needed for deployment in exceptionally rural areas. Community partnership will be essential in developing effective programming. Vance Granville Community College (VGCC), Piedmont Community College (PCC), Kerr Area Transportation Authority (KARTS), HubZone Technology Initiative (HTI), OurJourney2gether, NCWorks, and Perry Memorial Library are potential community partners for Vance County's needs. Programming will include basic How to Use Devices 101 classes, website safety and education, importance of K-12 device access for students, connecting locals with HubZone Technology Initiative to participate in their classes and receive refurbished devices for those that qualify. An example of community partnership programming for the KTRD project is it can cover the cost of devices or training for residents in these identified communities. HTI is a local nonprofit that would be available for the KTRD project to cover the cost of training and devices through subawards (maximum of five awards with the KTRD project). Hotspots will be needed to support residents that live in exceptionally rural areas of the KTRD communities served. Local governments have been supportive of KTRCOG hiring Digital Navigators and completing the Train the Trainer program with the Kramden Institute<sup>19</sup>. The program education suggested from local government were cybersecurity education through Cybersecurity and Infrastructure Security Agency (CSIA) cybersecurity training and exercises<sup>20</sup> as a bootcamp for the KTRD project. A Digital Navigator is needed to provide capacity support for training and implementation of broadband technical support in partnership with local services, including the VGCC campuses, PCC campuses, local Town Halls, and local libraries. A Certification for

---

<sup>19</sup> Kramden Institute, "Education Opportunities."

<sup>20</sup> CISA, "Cybersecurity Training & Exercises | CISA."

Microsoft Office<sup>21</sup> would support job skill training and educate more residents in the KTRD communities with digital literacy training that KTRCOG can define in partnership with RUS. As the provider for the KTRD project, KTRCOG proposes hiring three additional staff to support the regional expansion of broadband and support digital literacy training for distressed and socially vulnerable communities with the follow:

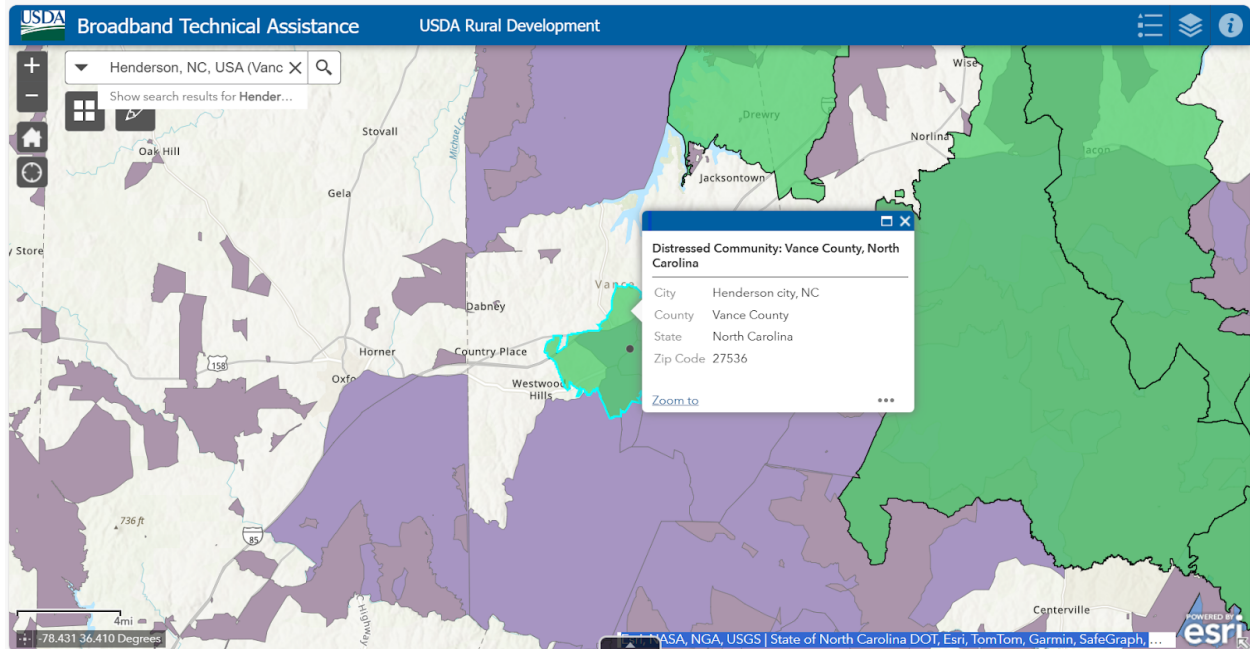
- *Kerr-Tar Rural Development Coordinator*: Clerk to the Regional Broadband Planning Committee (proposed to start September 2024), creates social media post on Instagram, Facebook, LinkedIn, and KTRCOG’s website, develop outreach materials under the direction of the Regional Project Manager who will collaborate with RUS staff, and support event planning for workshops and webinars for the Digital Navigators working in the region.
- *Digital Navigator: Community Organizations*: complete the Train the Trainer programming with the Kramden Institute to receive initial training, develop office hours to support each county’s needs based on the Digital Inclusion Plans, provide workshops for local community members to learn about best practices for cybersecurity and develop digital skills by working with community partners.
- *Digital Navigator: Workforce Development*: complete the Train the Trainer programming with the Kramden Institute to receive initial training, support the workforce development in the region through providing in-person workshops, develop office hours to support each county’s needs based on the Digital Inclusion Plans, and provide support for Certification Courses.
- *Referrals*: To respect existing programming or future programming that may begin in the interim of submitting this proposed programming, KTRCOG will refer all adults aged sixty and older to the Digital Navigator: Area on Aging and communicate collaboration with the Digital Agent in Person and Granville counties to expand support in the region.

*Vance County Distressed and Socially Vulnerable Communities:*

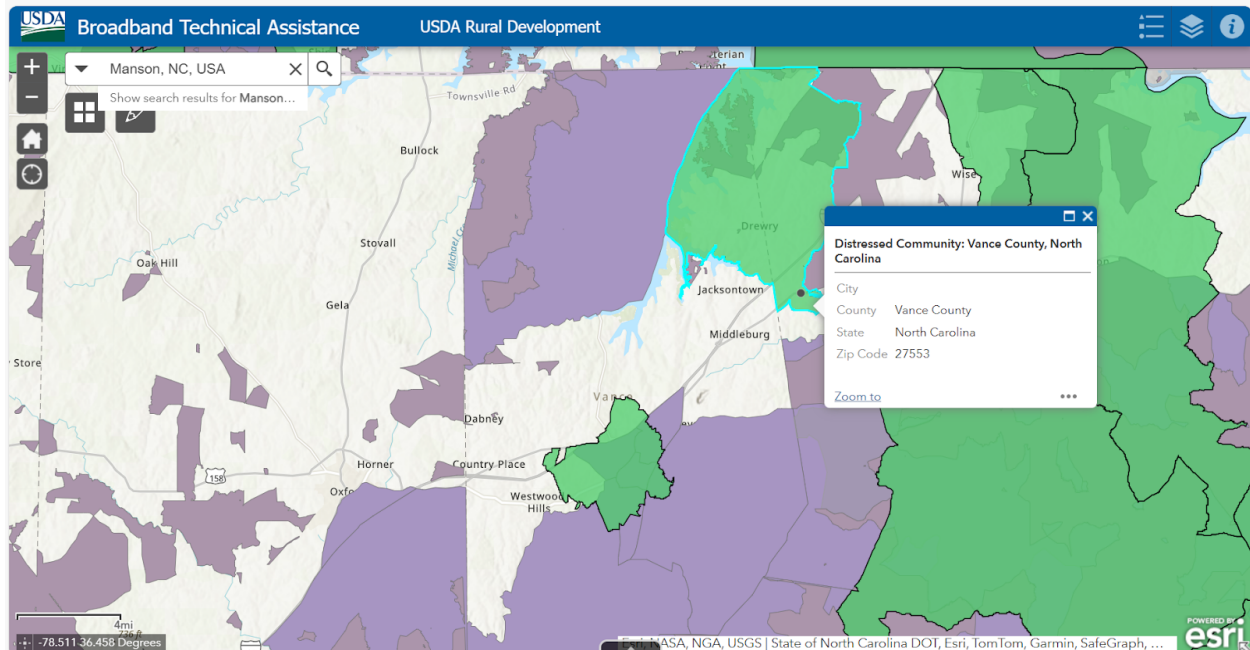
Henderson is located in the central area of Vance County and includes all of the 9605 and 9607 Census Tracts, and partial areas of 9606, 9608, and 9609 Census Tracts. Henderson includes the zip code 27536.

---

<sup>21</sup> Microsoft Corporation, “Microsoft Credentials.”



The proposed location for meetings, events, and training is the Perry Memorial Library, Farm Bureau meeting room is pre-approved with the City of Henderson as the central hub for KTRD project implementation. The southern half of the county Census Tracts includes zip codes 27536 and 27537 in Vance County (9605, 9606, 9607, 9608, 9609, and 9610). The northern half of the county Census Tract 9602 will not include the Enforceable Commitment area with zip code 27553. Manson is split between Vance and Warren counties and includes zip code 27553.

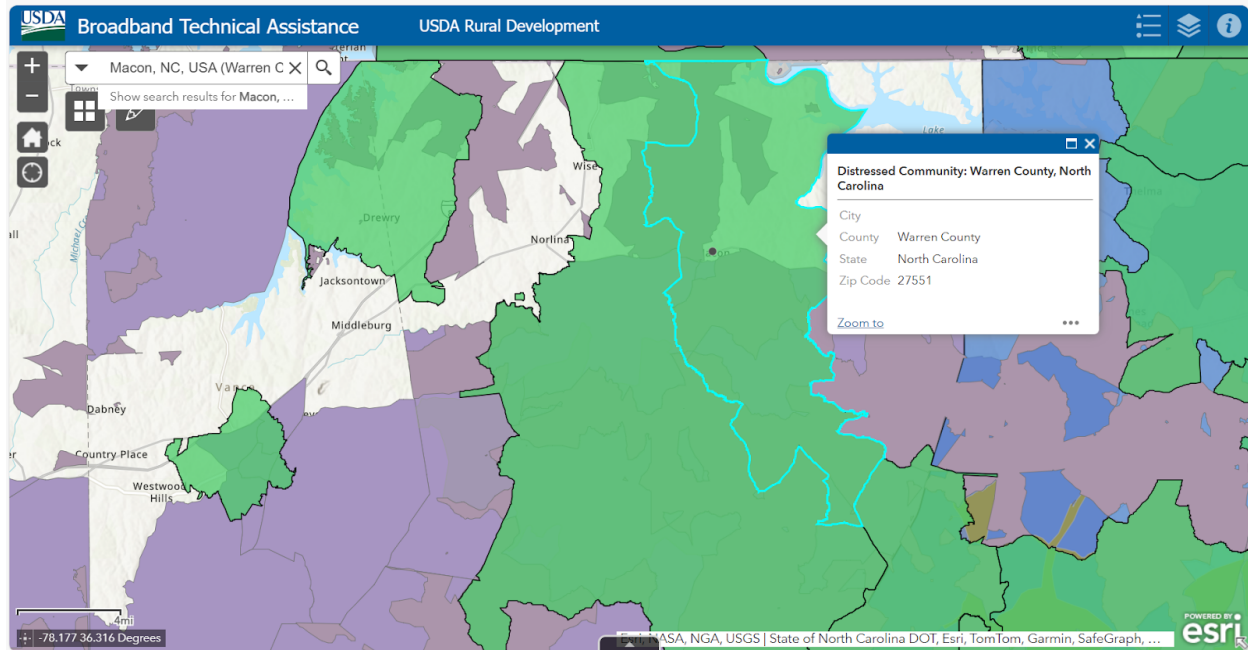


The Drewry Fire Department, located at 125 Firefighter Dr, Manson, NC 27553, is inside Vance County's jurisdiction as a proposed location to support the KTRD in partnership with Vance County. Vance County has agreed to utilize the Vance County Administration Building's second floor in the County Commissioner's room where over fifty people can gather at one time. The

KTRD project will provide a Digital Navigator for community organizations and a Digital Navigator to support workforce development.

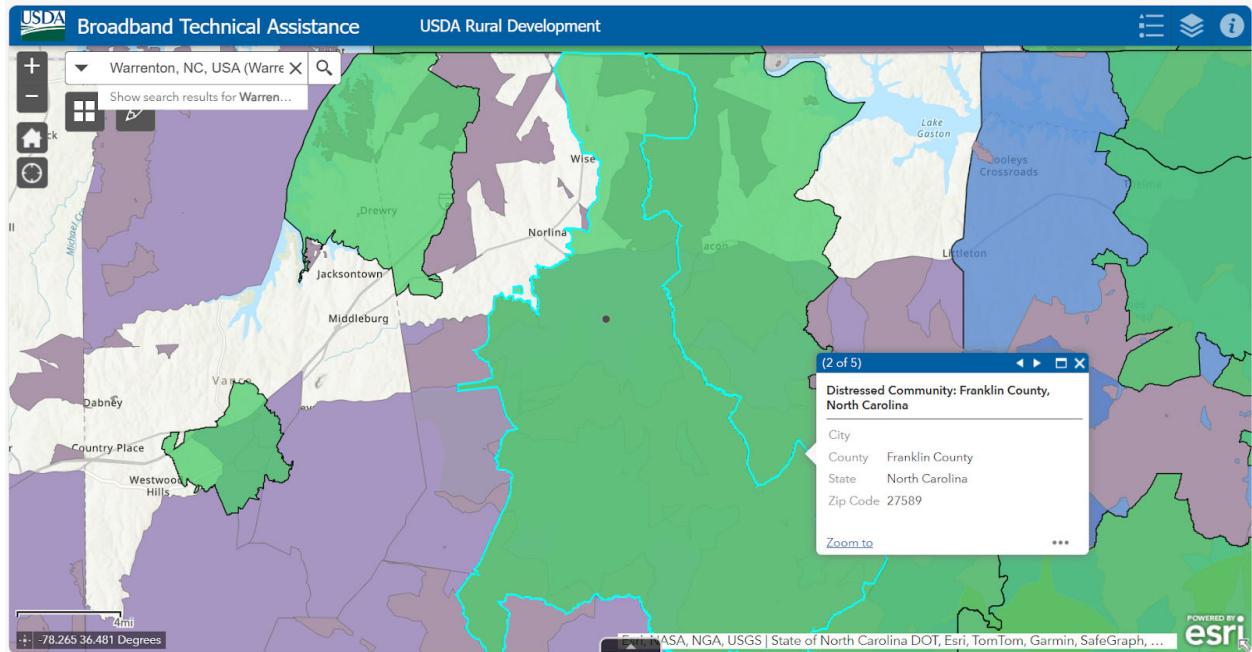
*Warren County Distressed and Socially Vulnerable Communities:*

Macon is located in the central point of Warren County with the zip Code 27551. Macon is a Distressed Community that is in an isolated area of Warren County in the Census Tract 9501.01 that spreads north to the lake.



There are two locations that have been established for the community partnership efforts. The Macon Baptist Church has ease of accessibility including ADA wheelchair, with proposed public WiFi access with Brightspeed service commitment for one year with a mesh system to amplify the signal. The local Macon Rural Fire Department, located at 1644 US Highway 158 E, Macon, NC 27551, is willing to provide support for programming efforts. The Macon Methodist Church offered public WiFi access through Verizon's cellular internet to provide an alternative service for one year with a mesh system to amplify the signal to reach Little Man Park, across the street. Little Man Park is taken care of through a joint effort between the Little Man Foundation and Warren County Parks and Recreation. A railroad bed is located between the fire department and Macon Methodist that can allow for ample parking to support these three locations. The two faith-based organizations request there be video monitoring for the and are willing to provide a scheduled meeting location upon request. On July 5th 2024, a study revealed 4,400 people traveled through the Town of Macon. The Town of Macon is willing to support surrounding communities to use their location for training, access, events, and general support for the KTRD project with an understanding of ongoing communication and request to use meeting spaces. Manson is split between Vance and Warren counties and includes zip code 27553 and will disinclude the Enforceable Commitment areas for broadband expansion efforts but will likely have residents participate in digital literacy programming through the KTRD project. Warren County Census Tract 9501.03 includes zip codes 27850, 27551, 27589, 27844, and 27563. Warren County Census Tract 9503 includes zip codes 27551, 27589, and 27537. Warren County Census Tract 9504 includes zip codes 27589, 27563, and 27537. There is a need in Warren

County for devices to support digital literacy training and bolster the technical assistance provided to this small community to promote broadband expansion.

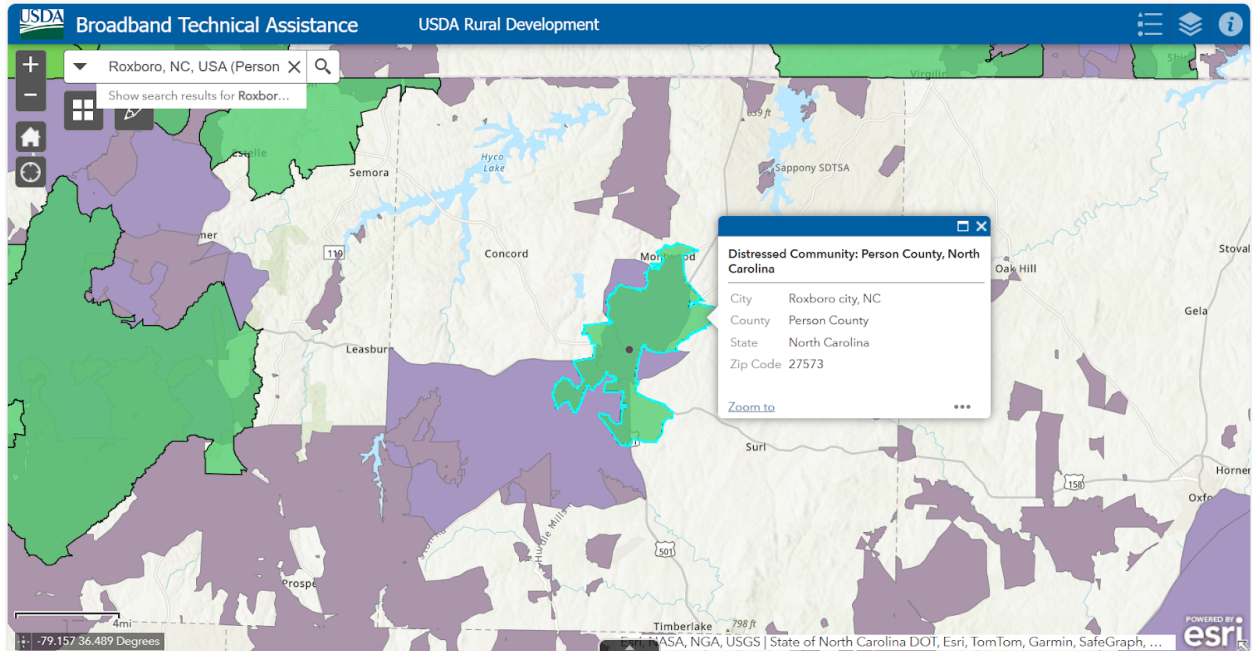


Warrenton is a distressed and socially vulnerable community and is the location of the administration for Warren County in the zip Code 27589. Warrenton provides the waste infrastructure administration for the county. The Warren County Library, located at 119 S Front St, Warrenton, NC 27589, can be used to support programming for Warren County. The KTRD project will provide a Digital Navigator for community organizations and a Digital Navigator to support workforce development.

*Person County Distressed and Socially Vulnerable Communities:*

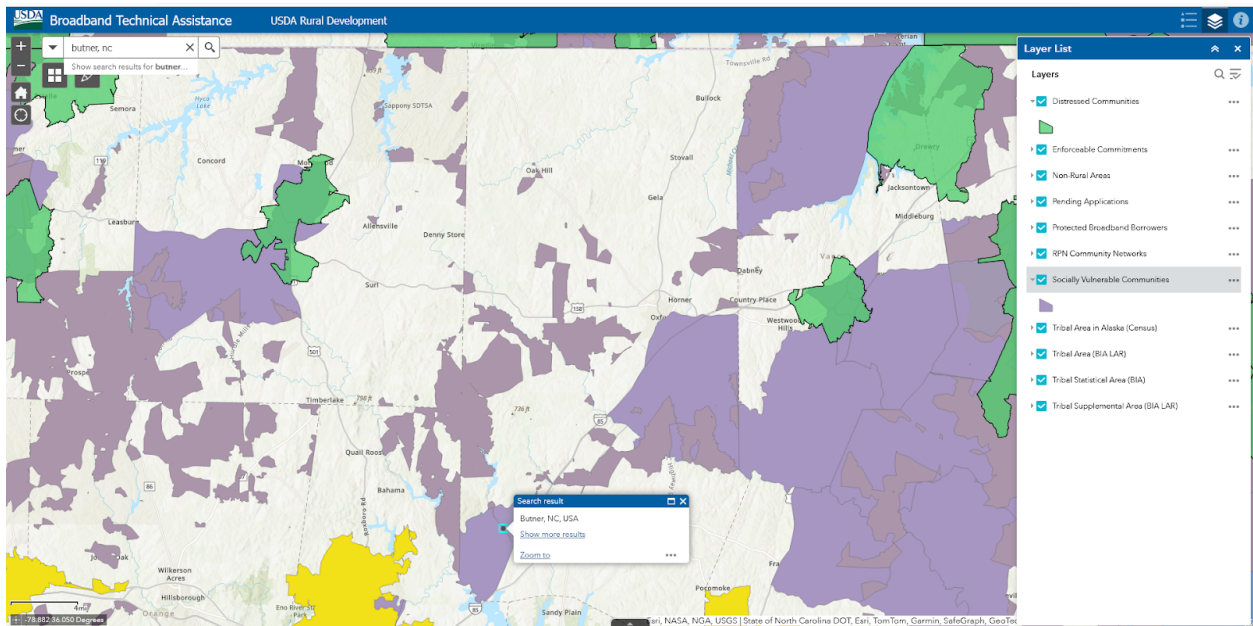
Roxboro is located in the central area of Person County and includes zip code 27573. The Distressed Community includes part of the three Census Tracts 9203, 9204, and 9206.01.





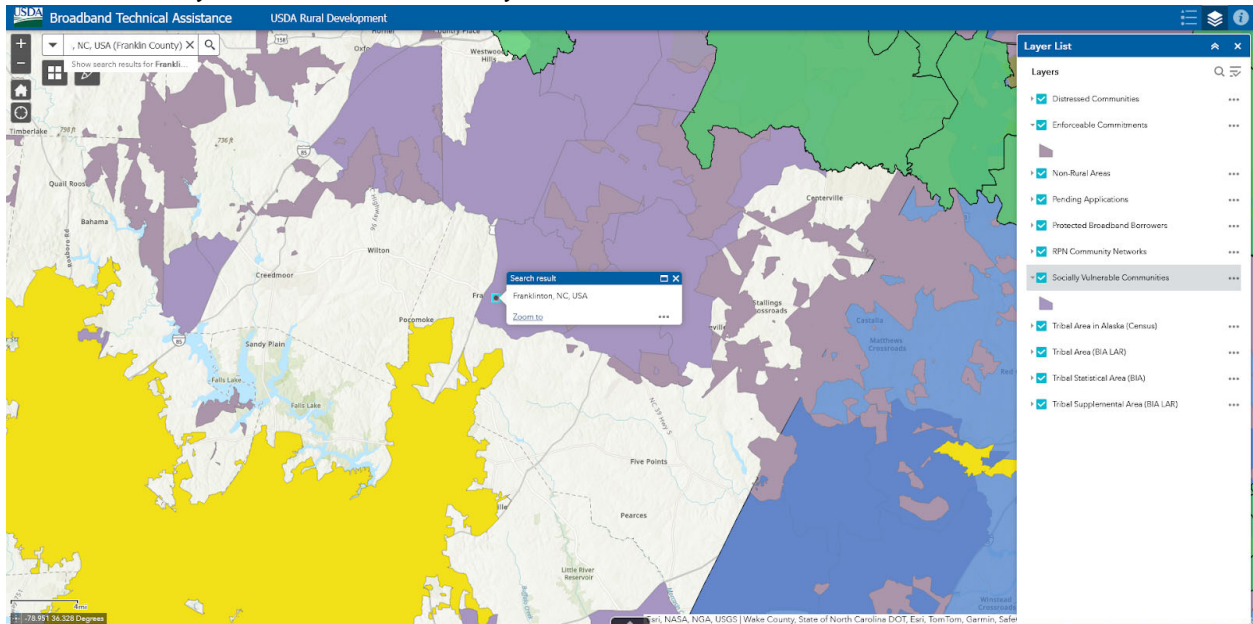
Based on the American Community Survey, approximately 40% of the housing is occupied by the owner. This statistic highlights that Roxboro is a rental community. Roxboro offered the following potential community partners to be included in the KTRD project; Roxboro Housing Authority, Roxboro Community Redevelopment Organization who have two training programs located off mount bethel church and Cleveland Lane. Proposed locations to support the KTRD project are K-12 schools after hours, Piedmont Community College has a business development center, the 'B-deck', that could potentially be used in community partnerships for this area, and the Person County Library can be used upon request and is a public meeting space. Person Area Transit System (PATS) can be used as a potential community partner to support transportation needs for the KTRD project. The KTRD project will provide a Digital Navigator for community organizations and a Digital Navigator to support workforce development.

## Granville County Distressed and Socially Vulnerable Communities:

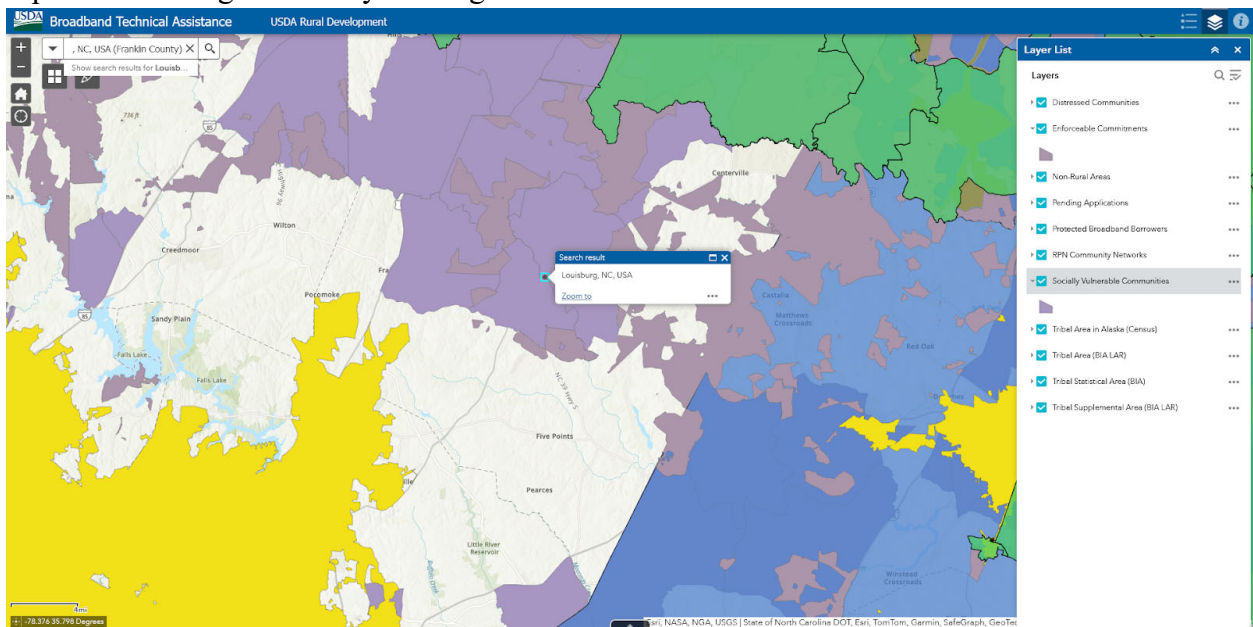


Butner is a Socially Vulnerable Communities located in Granville County that is not part of the Distressed Communities identified. The Town of Butner is supportive of the KTRD project and willing to cooperate with KTRCOG proposed project planning. The Cooperative Extension Digital Agent provides support to Granville County at the seniors center and cooperative extension. However, their services are not directed to local government support or workforce development. The KTRD project will provide a Digital Navigator for community organizations and a Digital Navigator to support workforce development.

## Franklin County Distressed and Socially Vulnerable Communities:



Franklinton is a Socially Vulnerable Communities located in Franklin County that is not part of the Distressed Communities identified, but does have additional needs to support broadband expansion and digital literacy training.



Louisburg is a Socially Vulnerable Communities located in Franklin County that is not part of the Distressed Communities identified, but does have additional needs to support broadband expansion and digital literacy training. The KTRD project will provide a Digital Navigator for community organizations and a Digital Navigator to support workforce development.

### Alignment of Budget to Work Plan

Line items 1, 2, 6, 7, 8, 9, and 15 are contractual services to support capacity needs for the KTRD project scope for the distressed and socially vulnerable communities identified. Travel expenses will be incurred during the project for each project team member. Funding is allocated to each specific role on line items 3 and 10 (roughly \$2,000 per person per year). Equipment will be needed to support exceptionally rural and rural communities. The line items 4, 11, and 13 will support the purchase of a needed laptop for the KTRD Coordinator, \$5,000 for each Digital Navigator to purchase and have service for mobile hotspots for the duration of the project, and \$15,000 reserved for equipment needed to support the project in exceptionally rural communities that do not have access to broadband service. Supplies were estimated for the KTRD Coordinator to allocate funding where needed for supplies to support planning efforts on line item 5. The KTRD Programming supplies line item 14 will be used for programming materials and additional needs to support the KTRD project. The other category for line items 12, 16, and 17 support supplement training for the Digital Navigators, Consultant fees to support specialized workshops and discuss the project challenges with subject matter experts, and for the subawards. The twenty total subawards maximum are set at \$10,000 each per application from the identified socially vulnerable and distressed communities in the KTRD project, with up to five awards available to support digital literacy training.

### **KTRD Organizational Capacity**

Councils of Governments were formed under the NC General Statutes 160-77.1 through 160-77.6 (current Statutes are: 160A-470 through 160A-478) which authorizes any two or more municipalities and counties to create a Regional Council of Local Officials. In late 1970, City and County officials banded together to explore forming a Council of Governments to serve the counties of Franklin, Granville, Person, Vance and Warren and the 11 municipalities therein. Today the Kerr-Tar Region still consists of these five named counties and 16 municipalities. In May of 1971, the official name of the Council was selected: Kerr-Tar Regional Council of Governments, with its purpose being to promote intergovernmental cooperation by developing and formalizing policy recommendations concerning matters having area wide significance. Today the COG has the following programs: Area on Aging, Economic and Community Development, Local Development District of the Economic Development Administration, Business Loans, Planning, Transportation, and WIOA Workforce Development. It also provides Administrative Services for the Region K Community Assistance Corporation and Kerr-Tar Regional Economic Development Corporation.

The Council of Governments strived towards meeting criteria by the Economic Development Administration (EDA) in order to be eligible for federal grants. After completing an acceptable Overall Economic Development Plan (OEDP), Region K was designated by EDA as an Economic Development District (EDD) in March of 1975, under the Public Works and Economic Development Act of 1965. As of today, the COG still runs two successful loan programs: the RLF Program which provides funding from \$25,000 to \$200,000 or 75% of project cost, whichever is less and a Micro-Enterprise Loan Program that offers funding from \$5,000 to \$25,000 for small businesses.

Membership in the Council of Governments of Member Units is accomplished by the voluntary adoption of identical resolutions of the governing bodies of the participating governmental units.

The COG is a local agency, owned, controlled and operated by groups of cities and counties, but no more responsible to one participating local government than to another. Servant and advocate of Local Government. The COG serves as an excellent linkage between local, state and federal governments. The general functions of the COG is to disseminate information of concern, serve as forum for discussion of governmental problems of mutual interest and concern, deal with regional problems in a manner mutually satisfactory to all local governments within the Region, provide technical staff services as needed by member cities and counties, serve as a common ground upon which local officials of an area can meet, evaluate common problems and opportunities for cooperative agreements, and coordinate mutual activities, plans and programs, and plan and coordinate as an extended arm of local member units.<sup>22</sup>

*Existing Broadband Technical Assistance:* KTRCOG has a full-time position, funded through grant programs that support technical assistance in the Regional Project Manager role, including grant writing services. Since October 2023 part of the scope of work under the grant funding allocation from Institute of Emerging Issues<sup>23</sup> supported the development of county level digital inclusion plans and a regional digital inclusion plan. The Regional Project Manager developed deliverables through supported collaboration with four (Franklin, Granville, Vance, and Warren) of the counties in the five-county service area. The Digital Inclusion Plans review the existing priority populations (community anchor institutions, community partners, and highlight the needs of the community to best support an implementation scope, tailored to each county. The Person County Digital Inclusion Plan was supported by the NC Lead Fellow internship program that ended in July 2024, and Cooperative Extension's Digital Agent from February 2024 until February 2026. The County Digital Inclusion Plans are currently under review by the County Commissioners, and once approved will be submitted to the North Carolina Department of Information Technology (NCDIT) for approval. Once approved by these local governing agencies will publish these documents publicly and begin the implementation as early as September 2024. KTRCOG is actively hiring for a Digital Navigator for the Area on Aging department within the Council of Governments, a statewide effort currently funded in partnership with the Department on Aging Services that supports the sixty years of age and older population. Cooperative Extension in Person and Granville counties have a Digital Agent providing support upon request to Senior Centers, Libraries, and one-on-one support upon request.

---

<sup>22</sup> "History of Kerr-Tar Regional COG | Kerr Tar COG."

<sup>23</sup> "IEI Receives \$1.2M Digital Equity Grant for Broadband Expansion and Digital Inclusion Efforts."

## KTRD Rurality

Rurality points for the KTRD project serving the least dense rural areas as measured by the population of the communities served. The overall rurality score was 18.33, determined by the average of the scores for all eighteen communities served by the KTRD project.

**Exceptionally Rural:** Areas with populations of 5,000 or fewer will receive 20 points:

- Warrenton (population 851), Manson (population 1,944), Macon (population 110), Franklinton (2,456), Louisburg (population 3,064), Warren County Census Tract 9501.03 (population 2,426), Warren County Census Tract 9503 (population 3,726), Warren County Census Tract 9504 (population 3,263), Vance County Census Tract 9602 (population 4,107), Vance County Census Tract 9605 (population 4,650), Vance County Census Tract 9606 (population 1,375), Vance County Census Tract 9607 (population 3,770), Vance County Census Tract 9608 (population 1,898). A total of 13 areas.

**Rural:** Areas with populations of 5,001-10,000 will receive 15 points:

- Roxboro (population 8,134), Butner (population 8,397), Vance County Census Tract 9606 (population 7,985), Vance County Census Tract 9610 (population 5,518). A total of four areas.

**Midrural:** Areas with populations of 10,001-20,000 will receive 10 points:

- Henderson (population 15,060). A total of one area.

Exceptionally Rural: 13 areas x 20 points each = 260 points

Rural: 4 areas x 15 points each = 60 points

Midrural: 1 area x 10 points = 10 points

*330 total points / 18 areas served = 18.33 rurality score.*

Kerr-Tar COG USDA FY 2024 BTA Program Communities Worksheet (CW)

Name of Applicant: Kerr-Tar Regional Council of Governments

Community to be served (city/town/county)	State	Projects serving Distressed Communities	Zip Code(s) of the Distressed Communities (if Yes in the previous column)	Projects serving Socially Vulnerable Communities, Tribal Lands, or RPN Community Networks	Census Population (from 2020 Census data)	Is the community contiguous and adjacent to a city or town with a population greater than 50,000 (a nonrural area)?	Name of Adjacent City or Town (if Yes in previous column)	Additional Descriptive Community Information (Optional)
Warrenton	NC	Yes	27589	Socially Vulnerable Community	851	No		This project will focus on the rural, underserved and unserved portions of Warrenton.
Henderson	NC	Yes	27536	Socially Vulnerable Community	15,060	No		This project will focus on the rural, underserved and unserved portions of Henderson.
Roxboro	NC	Yes	27573	Socially Vulnerable Community	8,134	No		This project will focus on the rural, underserved and unserved portions of Roxboro.
Manson, Vance County	NC	Yes	27553	N/A	part of 1,944	No		This project will focus on the rural, underserved and unserved portions of Manson in Vance County.
Manson, Warren County	NC	Yes	27553	N/A	part of 1,944	No		This project will focus on the rural, underserved and unserved portions of Manson in Warren County.
Macon	NC	Yes	27551	Socially Vulnerable Community	110	No		This project will focus on the rural, underserved and unserved portions of Macon.
Butner	NC	No		Socially Vulnerable Community	8,397	No		This project will focus on the rural, underserved and unserved portions of Butner.
Franklinton	NC	No		Socially Vulnerable Community	2,456	No		This project will focus on the rural, underserved and unserved portions of Franklinton.
Louisburg	NC	No		Socially Vulnerable Community	3,064	No		This project will focus on the rural, underserved and unserved portions of Louisburg.
Census Tract 9501.03, Warren County	NC	Yes	27850, 27551, 27589, 27844	Socially Vulnerable Community	2,426	No		This project will focus on the rural, underserved and unserved portions of Warren County Census Tract 9501.03.
Census Tract 9503, Warren County	NC	Yes	27551, 27589	Socially Vulnerable Community	3,726	No		This project will focus on the rural, underserved and unserved portions of Warren County Census Tract 9503.
Census Tract 9504, Warren County	NC	Yes	27589, 27563, 27537	Socially Vulnerable Community	3,263	No		This project will focus on the rural, underserved and unserved portions of Warren County Census Tract 9504.
Census Tract 9602, Vance County	NC	No		Socially Vulnerable Community	4,107	No		This project will focus on the rural, underserved and unserved portions of Vance County Census Tract 9602.
Census Tract 9605, Vance County	NC	Yes	27536	Socially Vulnerable Community	4,650	No		This project will focus on the rural, underserved and unserved portions of Vance County Census Tract 9605.
Census Tract 9606, Vance County	NC	Yes	27536, 27537	Socially Vulnerable Community	1,375	No		This project will focus on the rural, underserved and unserved portions of Vance County Census Tract 9606.
Census Tract 9607, Vance County	NC	Yes	27536	Socially Vulnerable Community	3,770	No		This project will focus on the rural, underserved and unserved portions of Vance County Census Tract 9607.
Census Tract 9608, Vance County	NC	Yes	27537, 27536	Socially Vulnerable Community	1,898	No		This project will focus on the rural, underserved and unserved portions of Vance County Census Tract 9608.
Census Tract 9609, Vance County	NC	Yes	27537, 27536	Socially Vulnerable Community	7,985	No		This project will focus on the rural, underserved and unserved portions of Vance County Census Tract 9609.
Census Tract 9610, Vance County	NC	No		Socially Vulnerable Community	5,518	No		This project will focus on the rural, underserved and unserved portions of Vance County Census Tract 9610.

*Please see the next page for a full page view of the spreadsheet.*

### KTRD Economic Need

Economic need is evident when reviewing the county poverty percentage of the communities proposed within the KTRD project application. KTRD Project U.S. Census Small Area Income and Poverty Estimates (SAIPE):

<b>FY24 BTA Program Economic Need Calculation Sample Worksheet</b>				
<b>Name of Applicant: Kerr-Tar Regional Council of Governments</b>				

Community to be served (city/town/county)	State	County	SAIPE Percent Poverty, All Ages	Economic Need Score
Warrenton	NC	Warren	20.7%	15
Henderson	NC	Vance	20.1%	15
Roxboro	NC	Person	13.8%	10
Manson	NC	Vance	20.1%	15
Macon	NC	Warren	20.7%	15
Butner	NC	Granville	11.4%	10
Franklinton	NC	Franklin	10.9%	10
Louisburg	NC	Franklin	10.9%	10
Census Tract 9501.03; Warren County	NC	Warren	20.7%	15
Census Tract 9503; Warren County	NC	Warren	20.7%	15
Census Tract 9504; Warren County	NC	Warren	20.7%	15
Census Tract 9602; Vance County	NC	Vance	20.1%	15
Census Tract 9605; Vance County	NC	Vance	20.1%	15
Census Tract 9606; Vance County	NC	Vance	20.1%	15
Census Tract 9608; Vance County	NC	Vance	20.1%	15
Census Tract 9609; Vance County	NC	Vance	20.1%	15
Census Tract 9610; Vance County	NC	Vance	20.1%	15

<b>Applicant's Estimated Economic Need Score</b> (Sum of Economic Need Points /Number of Communities)	13.82
--	-------

The *estimated economic need score for the KTRD project is 13.82*, which is the sum of communities to be served economic need points divided by the number of communities served in the project area. To calculate the economic need score, the “SAIPE Poverty Data” was used:

This spreadsheet was created to summarize data specific to the proposed project region.							
Geographic Information				All Ages			
State FIPS Code	County FIPS Code	Postal Code	Name	Poverty Estimate, All Ages	90% CI Lower Bound	90% CI Upper Bound	Poverty Percent, All Ages
37	069	NC	Franklin County	7,968	6,097	9,839	10.9
37	077	NC	Granville County	6,631	5,142	8,120	11.4
37	145	NC	Person County	5,397	4,175	6,619	13.8
37	181	NC	Vance County	8,368	6,471	10,265	20.1
37	185	NC	Warren County	3,695	2,939	4,451	20.7

## KTRD Creating More and Better Markets

The KTRD project will serve rural communities whose economic well-being ranks in the most distressed tier of the Distressed Communities Index. The most distressed tier encompasses communities with a score over 80.

ZCTA2020	Census 2020 Population* (Disclaimer in Source)	2010 Census Population	Counties in ZIP code	State	DCI Decile	Distress Score	Distress Status	County FIPs b/c	In Persistent Poverty County? Y/N
27553	1944	2937	Warren County; Vance County	North Carolina	9	84.73786005	Distressed	37181	N
27551	2052	1962	Warren County	North Carolina	9	83.20439318	Distressed	37185	N
27589	6927	8370	Franklin County; Warren County	North Carolina	10	97.554742	Distressed	37069	N
27573	11017	11414	Person County	North Carolina	10	92.86109	Distressed	37145	N
27536	15998	17289	Vance County	North Carolina	10	93.80396491	Distressed	37181	N

*Distressed Communities Index listed five distress scores above 80 in the KTRD project:*

- ZCAT2020: 27753 had a distress score of 84.73
- ZCAT2020: 27551 had a distress score of 83.20
- ZCAT2020: 27589 had a distress score of 97.55
- ZCAT2020: 27573 had a distress score of 92.86
- ZCAT2020: 27536 had a distress score of 93.80

## KTRD Projects advancing Racial Justice, Place-Based Equity and Opportunity

The KTRD project proposes to serve communities with a Social Vulnerability Index (SVI) with a score of 0.75 or higher:

- Franklin County: 0.64 SVI <sup>24</sup>
- Granville County: 0.66 SVI <sup>22</sup>
- Person County: 0.77 SVI <sup>22</sup>
- Vance County: 0.98 SVI <sup>22</sup>
- Warren County: 0.89 SVI <sup>22</sup>

*Three of the counties in the KTRD project area have a Social Vulnerability Index above 0.75.*

<sup>24</sup> “Social Vulnerability Index | Data | Centers for Disease Control and Prevention.”



## **KTRD Performance Measures**

### Required Reporting:

(a) Annual Reporting. The Awardee shall submit an annual Financial Status Report on SF269A.

(b) Closeout Report. The Awardee shall deliver a closeout report to RUS no later than one hundred twenty (120) days after the expiration or termination of the Award or expenditure of all Award funds. The close out report shall address: (i) a comparison of actual accomplishments to the objectives set forth in the Application; (ii) a description of problems, delays, or adverse conditions that occurred, or which affected the attainment of overall Scope of Work objectives, prevented the meeting of time schedules or objectives, or precluded the attainment of particular work elements; and (iii) a comparison of how funds were spent against the budget submitted with the Application, approved by RUS, and attached hereto as Schedule 3.

*Voluntary Quarterly Reports:* The KTRD Coordinator will submit quarterly reports every 3 months from the start date of the project. The reports will be similar to the current quarterly reports used in the Digital Inclusion Plans development:

- Grantee Reporting Information: name of recipient organization, date form completed, report quarter (January, April, July, October), name and contact information for the person filling out the form.
- Community Metrics: plan status, what staff member(s) helped with the project this quarter, list key stakeholders and sectors involved in the planning process (list communities served, stakeholders engaged, and organizations engaged), list the dates with titles and descriptions of events with the number of attendees from events, list priority populations served (workforce or local governments), meeting notes from broadband planning committee.
- Communities served updates: For each community listed for the KTRD project, provide a brief description of updates since the last quarterly report.
- Technical Assistance: list activities provided that support the expansion of broadband in communities served under the KTRD project.
- KTRD Programming Metrics: Number of individuals supported by Digital Navigators under the KTRD project during this reporting period.
- Request for RUS support in specific programming activities for the upcoming quarter.

## Bibliography

- CISA. "Cybersecurity Training & Exercises | CISA." Accessed August 19, 2024.  
<https://www.cisa.gov/cybersecurity-training-exercises>.
- "GKN Driveline to Close Roxboro NC Plant, Lay off Employees | Raleigh News & Observer." Accessed August 20, 2024.  
<https://www.newsobserver.com/news/business/article286596060.html>.
- "History of Kerr-Tar Regional COG | Kerr Tar COG." Accessed August 19, 2024.  
<https://www.kerrtarco.org/about/regions-history/>.
- Institute for Emerging Issues. "IEI Receives \$1.2M Digital Equity Grant for Broadband Expansion and Digital Inclusion Efforts," January 19, 2023.  
<https://iei.ncsu.edu/2023/01/19/state-awards-9-9m-in-grants-to-expand-digital-equity-and-literacy-initiatives/>.
- Kramden Institute. "Education Opportunities." Kramden. Accessed August 19, 2024.  
<https://kramden.org/education-opportunities/>.
- Microsoft Corporation. "Microsoft Credentials." Accessed August 19, 2024.  
<https://learn.microsoft.com/en-us/credentials/browse/>.
- MyFutureNC. "North Carolina County Educational Data and Resources." NC Educational Attainment Dashboard | MyFutureNC. Accessed August 18, 2024.  
<https://dashboard.myfuturenc.org/county-data-and-resources/>.
- North Carolina Association of County Commissioners. "County Data and Information." Accessed August 18, 2024.  
<https://www.ncacc.org/research-and-publications/research/county-data-and-information/>.
- "Social Vulnerability Index | Data | Centers for Disease Control and Prevention." Accessed August 19, 2024. <https://data.cdc.gov/Vaccinations/Social-Vulnerability-Index/ypqf-r5qs>.
- "States Aligning to Federal Broadband Access Standards, but Barriers Remain," November 27, 2023. <https://pew.org/40VjtpE>.
- United States Census Bureau. "Butner NC 2020: DEC Demographic and Housing Characteristics." Accessed August 18, 2024.  
<https://data.census.gov/table/DECENNIALDHC2020.P1?q=P1:%20RACE&g=160XX00US3709360>.
- . "Franklin County, North Carolina - Census Bureau Profile." Accessed August 18, 2024.  
[https://data.census.gov/profile/Franklin\\_County,\\_North\\_Carolina?g=050XX00US37069](https://data.census.gov/profile/Franklin_County,_North_Carolina?g=050XX00US37069).
- . "Franklinton NC 2020: DEC Demographic and Housing Characteristics." Accessed August 18, 2024.  
<https://data.census.gov/table/DECENNIALDHC2020.P1?q=P1:%20RACE&g=160XX00US3724720>.
- . "Granville County, North Carolina - Census Bureau Profile." Accessed August 18, 2024.  
[https://data.census.gov/profile/Granville\\_County,\\_North\\_Carolina?g=050XX00US37077](https://data.census.gov/profile/Granville_County,_North_Carolina?g=050XX00US37077).
- . "Historical Population Density Data (1910-2020)." Accessed August 18, 2024.  
<https://www.census.gov/data/tables/time-series/dec/density-data-text.html>.
- . "Louisburg NC 2020: DEC Demographic and Housing Characteristics." Accessed August 18, 2024.  
<https://data.census.gov/table/DECENNIALDHC2020.P1?q=P1:%20RACE&g=160XX00US3739360>.
- . "Person County, North Carolina - Census Bureau Profile." Accessed August 18, 2024.  
[https://data.census.gov/profile/Person\\_County,\\_North\\_Carolina?g=050XX00US37145](https://data.census.gov/profile/Person_County,_North_Carolina?g=050XX00US37145).
- . "Roxboro NC 2020: DEC Demographic and Housing Characteristics." Accessed August 18, 2024.  
<https://data.census.gov/table/DECENNIALDHC2020.P1?q=P1:%20RACE&g=160XX00US3758160>.
- . "Understanding Population Density." Census.gov. Accessed August 18, 2024.

<https://www.census.gov/newsroom/blogs/random-samplings/2015/03/understanding-population-density.html>.

———. “Vance County Census Tracts 2020: DEC Demographic and Housing Characteristics.” Accessed August 18, 2024.

[https://data.census.gov/table/DECENNIALDHC2020.P1?q=P1:%20RACE&g=050XX00US37181\\$1400000](https://data.census.gov/table/DECENNIALDHC2020.P1?q=P1:%20RACE&g=050XX00US37181$1400000).

———. “Vance County, North Carolina - Census Bureau Profile.” Accessed August 18, 2024.

[https://data.census.gov/profile/Vance\\_County,\\_North\\_Carolina?g=050XX00US37181](https://data.census.gov/profile/Vance_County,_North_Carolina?g=050XX00US37181).

———. “Warren County Census Tract 2020: DEC Demographic and Housing Characteristics.” Accessed August 18, 2024.

[https://data.census.gov/table/DECENNIALDHC2020.P1?q=P1:%20RACE&g=050XX00US37185\\$1400000](https://data.census.gov/table/DECENNIALDHC2020.P1?q=P1:%20RACE&g=050XX00US37185$1400000).

United States Code. “7 U.S.C. 1991(a)(13)(H) and (I).” Accessed August 8, 2024.

<https://www.govinfo.gov/content/pkg/USCODE-2020-title7/pdf/USCODE-2020-title7-chap50-subchapIV-sec1991.pdf>.

“Warren County, North Carolina - Census Bureau Profile.” Accessed January 24, 2024.

[https://data.census.gov/profile/Warren\\_County,\\_North\\_Carolina?g=050XX00US37185](https://data.census.gov/profile/Warren_County,_North_Carolina?g=050XX00US37185).