

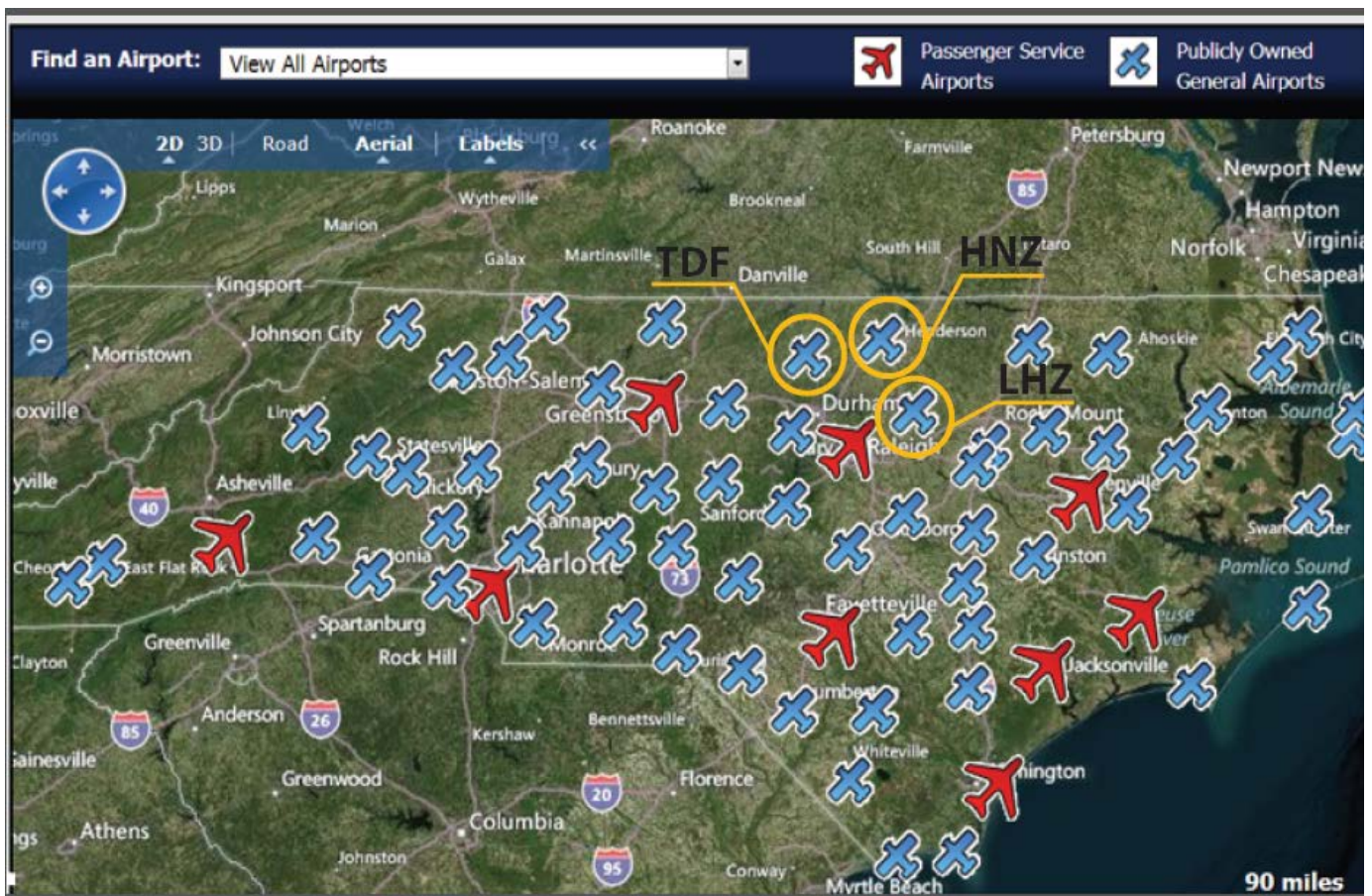
Kerr-Tar Regional Transportation Planning Organization (KTRPO)

AIRPORT COMPARISON

December 2013

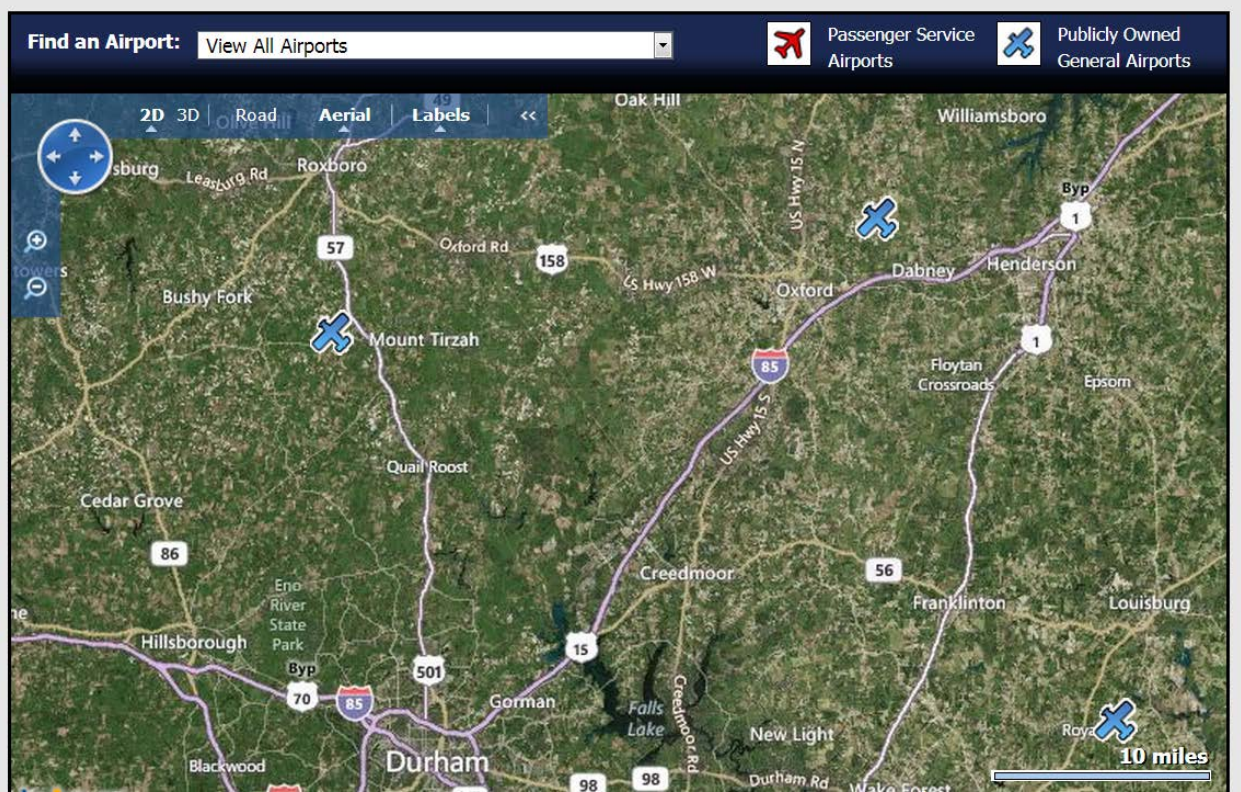
North Carolina’s system of airports provides connectivity between North Carolina and global markets. The North Carolina Department of Transportation’s Division of Aviation supports 9 commercial airports and 63 general aviation airports. In economic terms, 108,850 aviation related jobs are supported by the states’ airports, \$26 billion annual impact, and \$771 million in direct government revenue (NC DOT DOA, 2012).

The region has two publicly owned general aviation airports: Henderson-Oxford (HNZ) located between Granville and Vance Counties and Person County (TDF) located in southern Person County. Triangle North Executive Airport (LHZ) is located in Louisburg, however; the airport falls in Capital Area Metropolitan Planning Organization (CAMPO) jurisdiction.



General Aviation provides important infrastructure to rural community’s economic development. Kerr-Tar RPO airports are important links to business access, transit centers, and time-sensitive shipments that enhance the location of the region. In dollar terms, total

2012 estimated output from Oxford-Henderson totaled \$5,280,000 and \$9,590,000 from Person County (NC DOT DOA, 2012)



The following chart compares Person County and Henderson-Oxford Airports' specifications. Airport data is sourced from North Carolina Division of Aviation and both Airport Manager's questionnaire and interview responses. Triangle North Executive is included in the comparison as a like-size benchmark airport, but not a part of KTRPO.

Henderson-Oxford (HNZ)	Person County (TDF)	Triangle North Executive (LHZ)
50 aircraft based on field	46 aircraft based on field	116 aircraft based on field
5002' x 100' runway	6000' x 100' runway	5500' x 100' runway
(4) T Hangers	(3) 10 Bay Hangers, (1) Corporate, (1) Maintenance	(6) 60 x 60 (3) 50 x 50 (1) 100 x 150 (1) 100 x 120 Hangers
Accommodates light jet aircraft	Accommodates jet aircraft (DC-9)	Accommodates Gulfstream 5
Navigation aids: Localizer, NDB, GPS	Navigation aids: GPS, ILS	Navigation aids: GPS, ILS
Activity: 95% Comm. 5% Gen Aviation <1% Military	Activity: 30% Comm. 55% Gen Aviation 15% Military	Activity: 20% Comm. 70% Gen Aviation 10% Military
Ownership: Shared by Granville, Vance, Henderson, Oxford	Ownership: Person County	Ownership: Franklin County
Services: Jet A, 24-hr self service, tie-downs, rental cars, maintenance, WIFI	Services: AV Gas, Jet A, tie-downs, rental cars, maintenance, WIFI	Services: Jet A, AV Gas, aircraft handling, instruction, maintenance, sky sports
FBO Sales-	FBO Sales- \$660,000	FBO Sales-\$630,000

<http://www.ncdot.gov/aviation/download/AirportGuide.pdf>

The information below is a summary comparison of operations at Oxford-Henderson and Person County (KTRPO) airports and Triangle North airport (CAMPO). The information was gathered by airport manager questionnaire reports, local transportation improvement plans (TIP), and site visits.

Henderson-Oxford (HNZ)

**Person County (TDF)
(LHZ)**

Triangle North

<ul style="list-style-type: none"> • Airport Manager Mike Kellogg reported that the current 500' extension project would improve access to existing employment centers by accommodating larger type aircraft 	<ul style="list-style-type: none"> • Airport Manager Bill Tougas says that the airport is the primary access point for economic centers AW, GKN, Treyburn Corp. Park, Butner State Hospitals, and Virginia International Raceway 	<ul style="list-style-type: none"> • Airport Manager Steve Merritt says that airport facilities are adding capacity to already occupied hangers and buildings. Triangle North Business Park will utilize new infrastructure spaces.
<ul style="list-style-type: none"> • The airport has a Transportation Improvement Plan (TIP), but no connection to other Capital Improvement Plans or Comprehensive Plans 	<ul style="list-style-type: none"> • Person Co. Airport has a TIP and connections to the Person County Futures Project 	<ul style="list-style-type: none"> • Triangle North Airport has a TIP and connects to Triangle North Industrial Plan
<ul style="list-style-type: none"> • Freight access is not improved by current projects 	<ul style="list-style-type: none"> • Airport safety is improved by a current project to improve the existing fuel farm. Also, a perimeter fence installation is scheduled in 2014 as a wildlife deterrent 	<ul style="list-style-type: none"> • Freight access is limited due to proximity to RDU
<ul style="list-style-type: none"> • Local land-use regulations do protect 	<ul style="list-style-type: none"> • County zoning includes an airport overlay district, protecting airspace and land-use 	<ul style="list-style-type: none"> • Louisburg zoning has special airport zoning, along with noise zoning
<ul style="list-style-type: none"> • There have been no documented runway accidents in the past year 	<ul style="list-style-type: none"> • There have been no documented runway accidents in the past year 	<ul style="list-style-type: none"> • There have been no documented runway accidents in the past year
<ul style="list-style-type: none"> • Proximity to regional and statewide transportation routes are the primary strengths of the airport 	<ul style="list-style-type: none"> • Taxiway lighting is already upgraded to LED MITL for increased visibility and safety 	<ul style="list-style-type: none"> • Triangle North is a reliever airport for RDU and principal transit center for Youngsville Industrial Park.
<ul style="list-style-type: none"> • Decline in commercial, general aviation, and military usage has stalled airport vitality as an economic development component 	<ul style="list-style-type: none"> • The airport is considered to be an integral component of design plans for Person-Durham County Business Park. 	<ul style="list-style-type: none"> • Undisturbed land encompassed in Triangle North allows for future development to meet growth needs.

Oxford-Henderson (HNZ)



Triangle North (LHZ)



Person County (TDF)



Kerr-Tar
Regional Council
Of Governments

Michael Ciriello, Planning Director
252.436.2040